

Fig.1

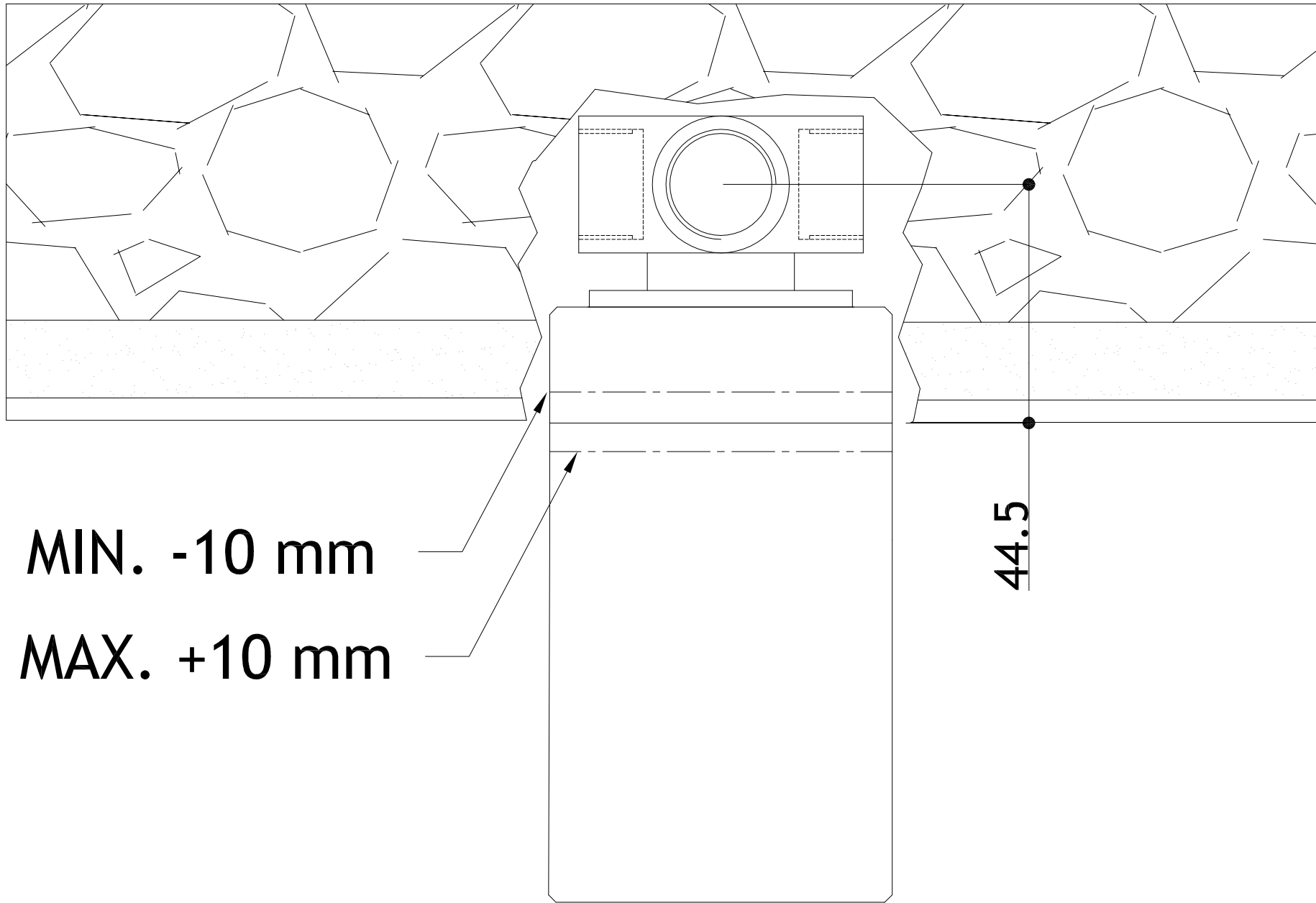
WARNING

- 1- The built-in housing must be installed so that the reference line on the protection lid will correspond to the future finished wall level.
- 2- Check that the built-in housing and protection lid are perfectly horizontal.

**MGS Progetti srl**

Corso Milano,189 - 28883 Gravellona Toce (VB) - Italy

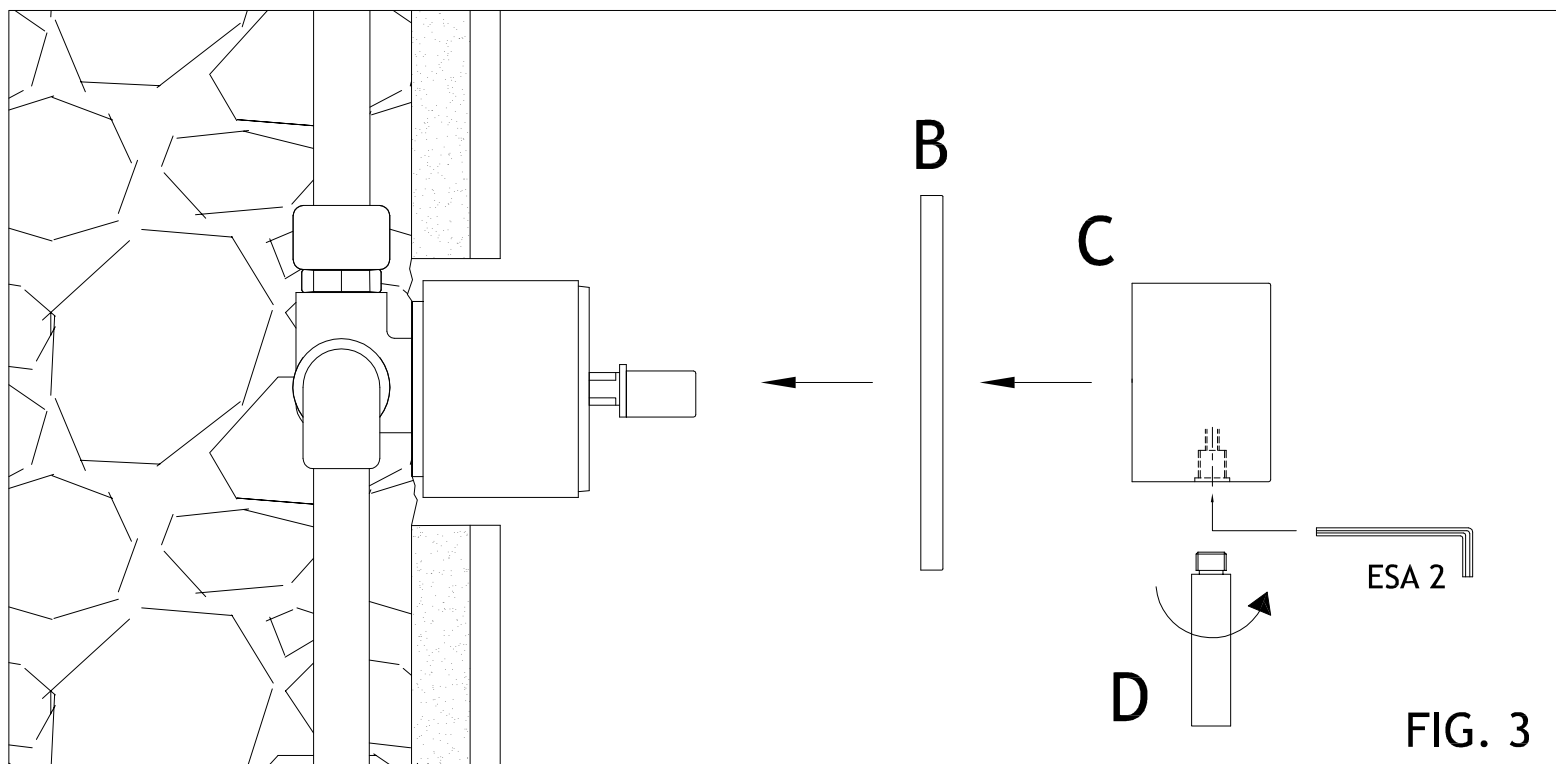
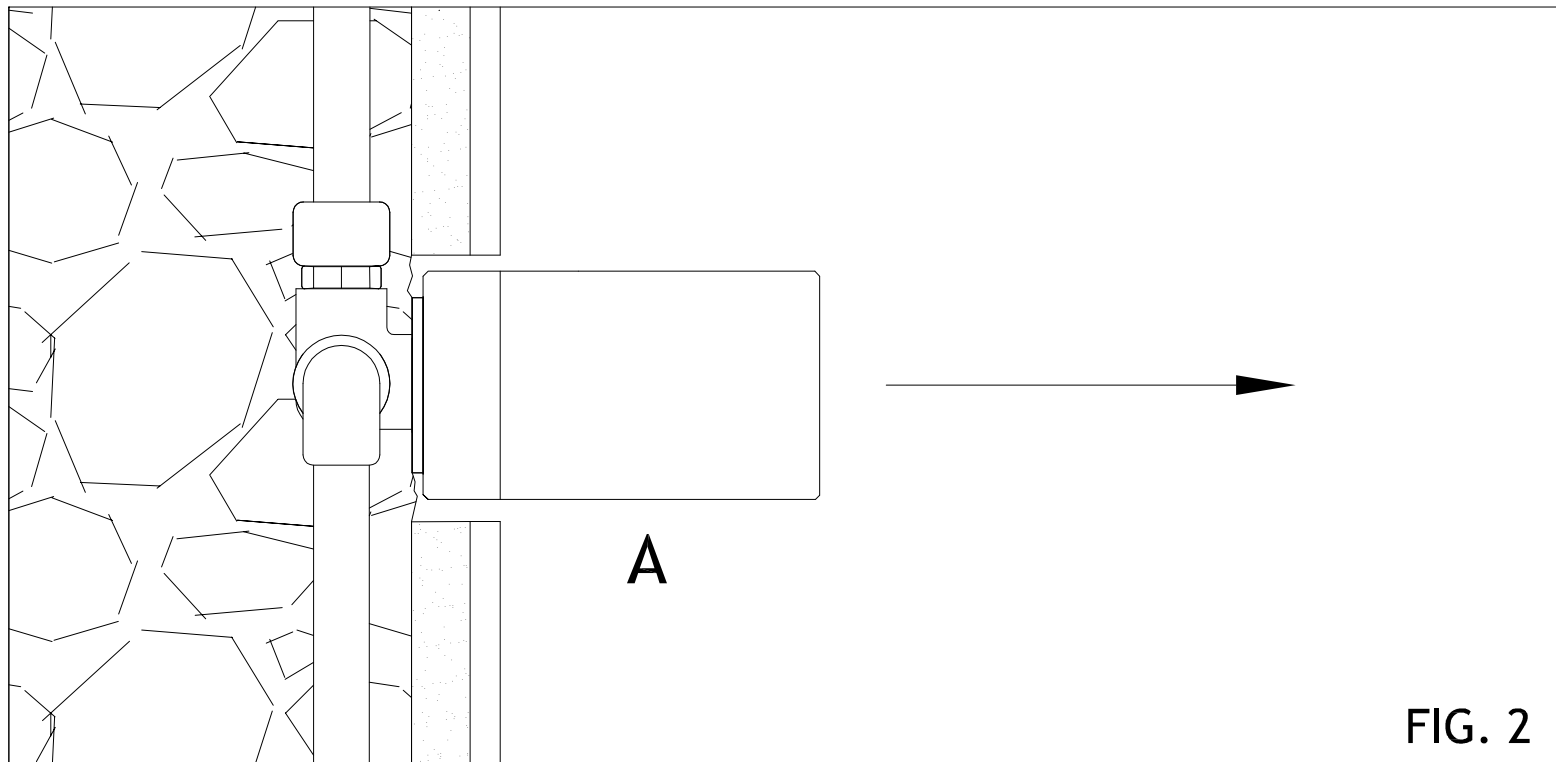
www.mgsprogetti.com - E-mail: info@mgsprogetti.com - Tel.:+39 0323 865218 - Fax:+39 0323 865215



**MIN. -10 mm**  
**MAX. +10 mm**

**44.5**

**FIG. 1**



## **ASSEMBLY INSTRUCTIONS BUILT-IN SHOWER MIXER MB435**

### **FIRST STEP**

Remove various parts from the carton with extreme care.

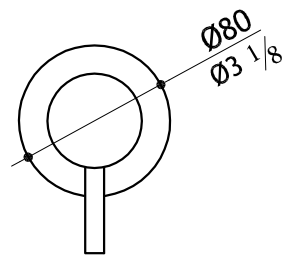
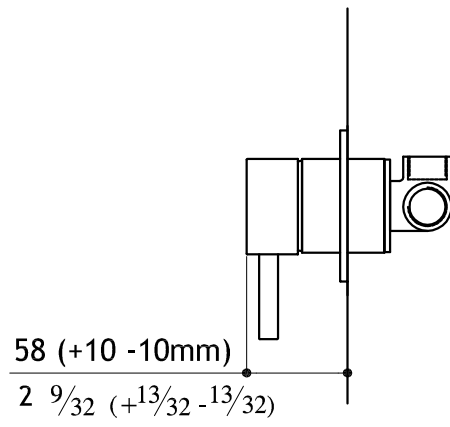
Check on the wall that the built-in valve is clean and that installation has been made correctly, according to our separate pre-assembly instructions. In particular, check that the coloured line indicated on the plastic protection lid is positioned +/-10 mm with respect to the wall level (FIG 1) and that the shower handle finishing ring covers the wall cut area.

Remove protection lid (A) from the valve body (FIG 2).

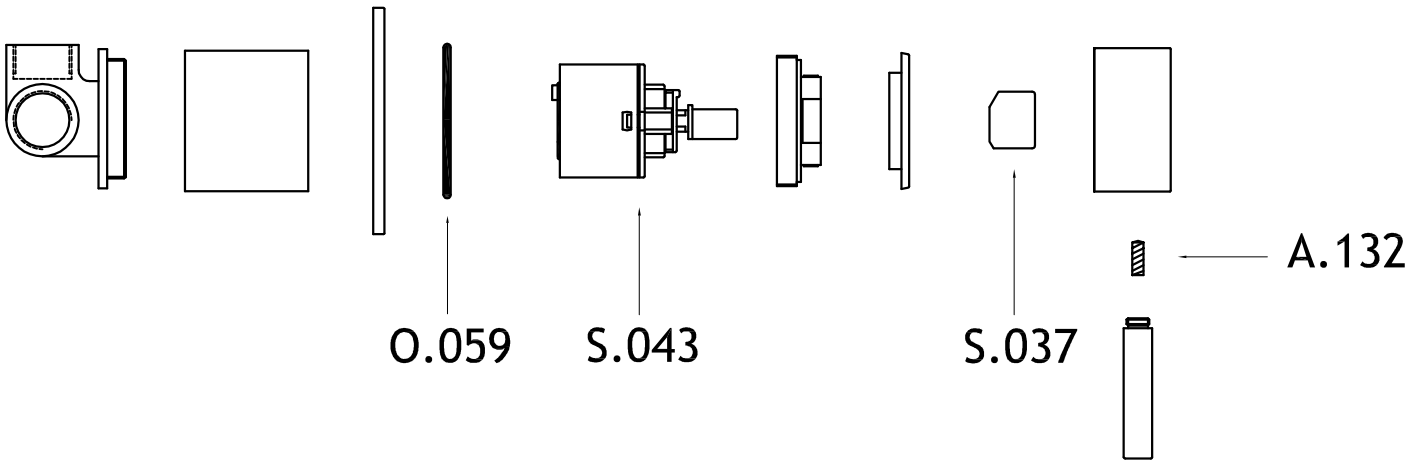
### **ASSEMBLY OF THE CONTROL HANDLE**

(FIG 3)

- Push finishing ring (B) through valve body against the wall.
- Push handle (C) onto the valves shaft and tighten grub screw with attached allen key (ESA2). - -
- Screw lever (D) onto handle (C).



MB435 (MB27)



MB435 (MB27)