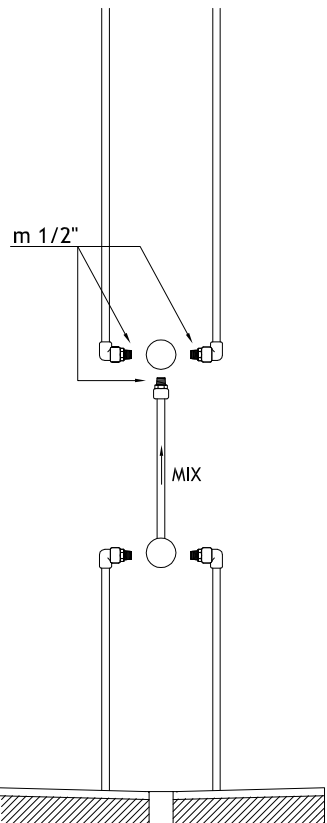
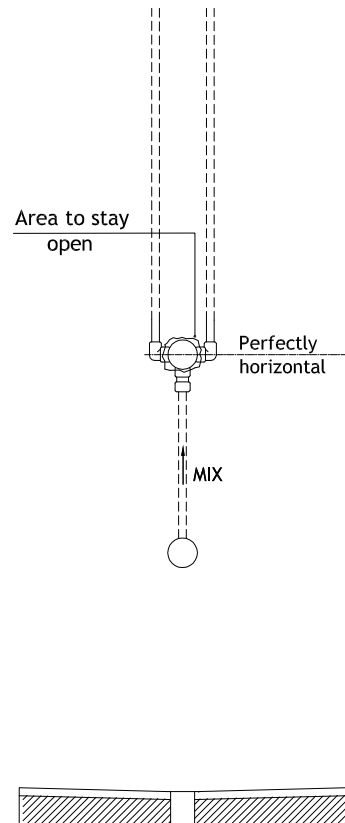


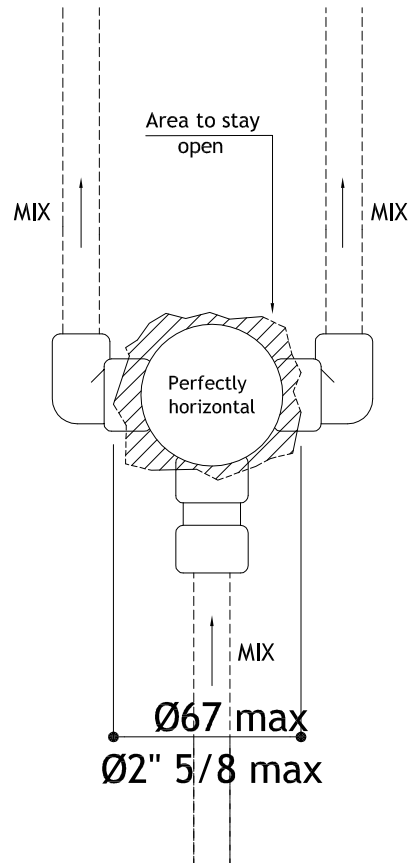
PLUMBING CONNECTION



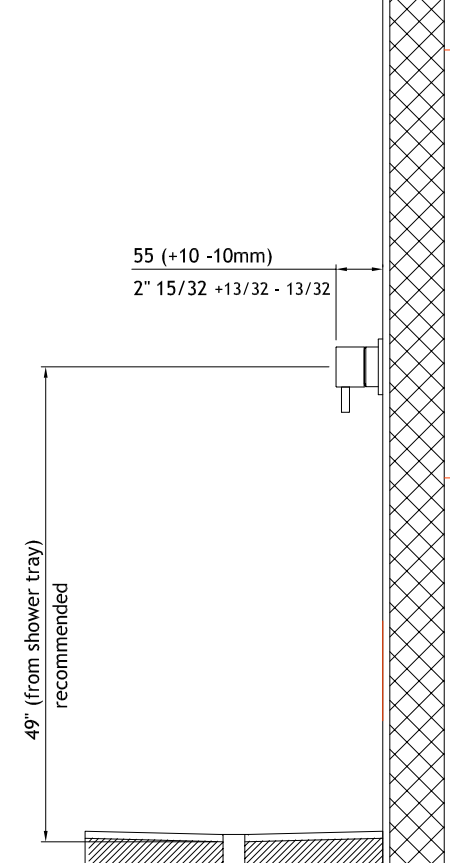
WALL DETAILS  
(After Plumbing)



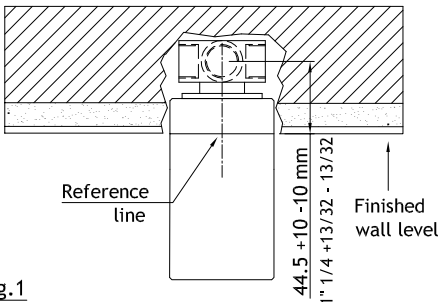
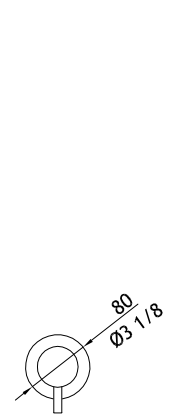
DETAILS FOR WALL  
COVERING



RECOMMENDED POSITIONS



FRONT VIEW



WARNING

- 1- The diverter body must be installed so that the reference line on the protection cover will correspond to the future finished wall level.
- 2- Check that diverter body and protection cover are perfectly horizontal.
- 3- Never close output nozzle.

**MGS Progetti srl**

Corso Milano, 189 - 28883 Gravellona Toce (VB) - Italy

www.mgsprogetti.com - E-mail: info@mgsprogetti.com - Tel.: +39 0323 865218 - Fax: +39 0323 865215

Fig.1

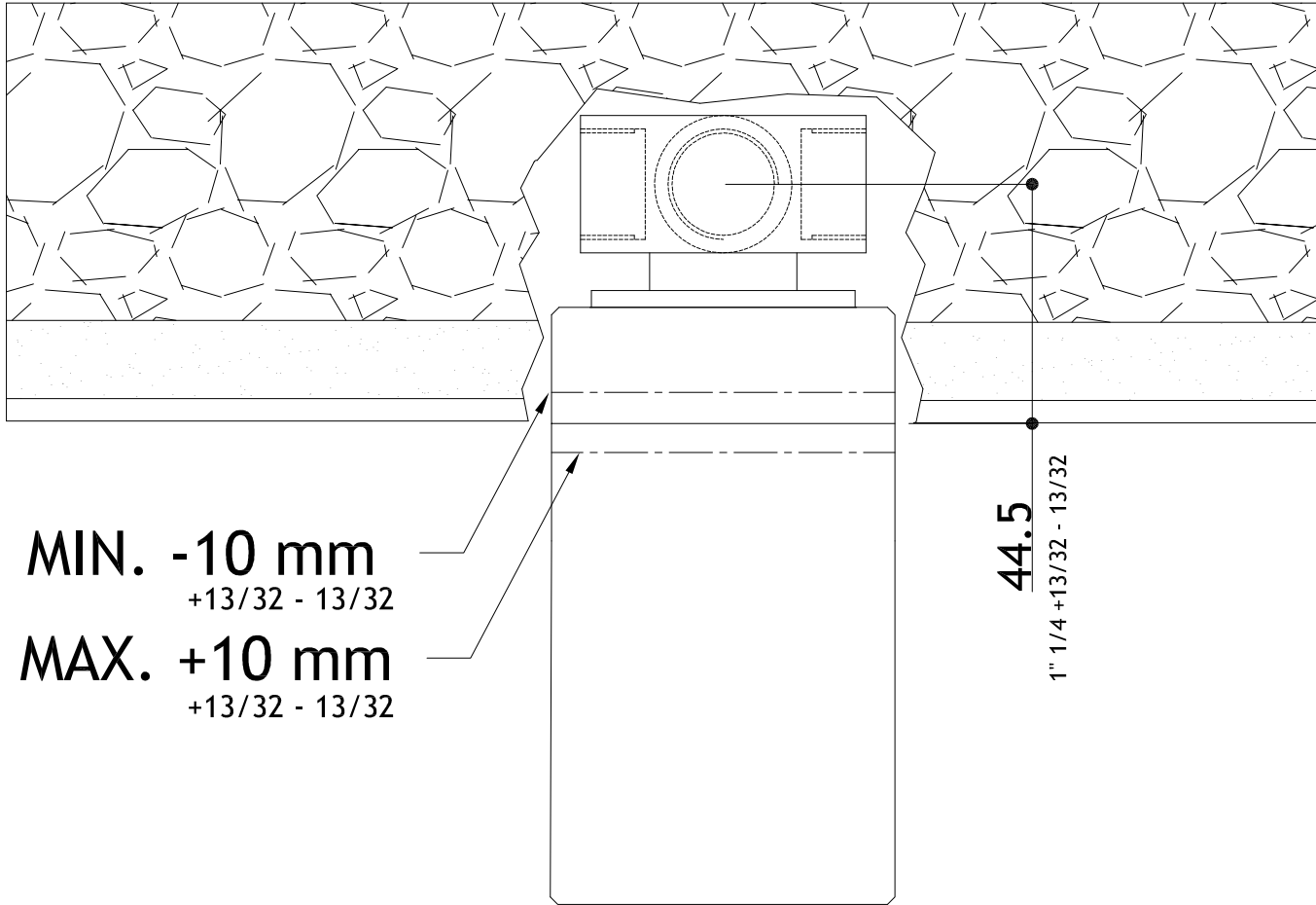
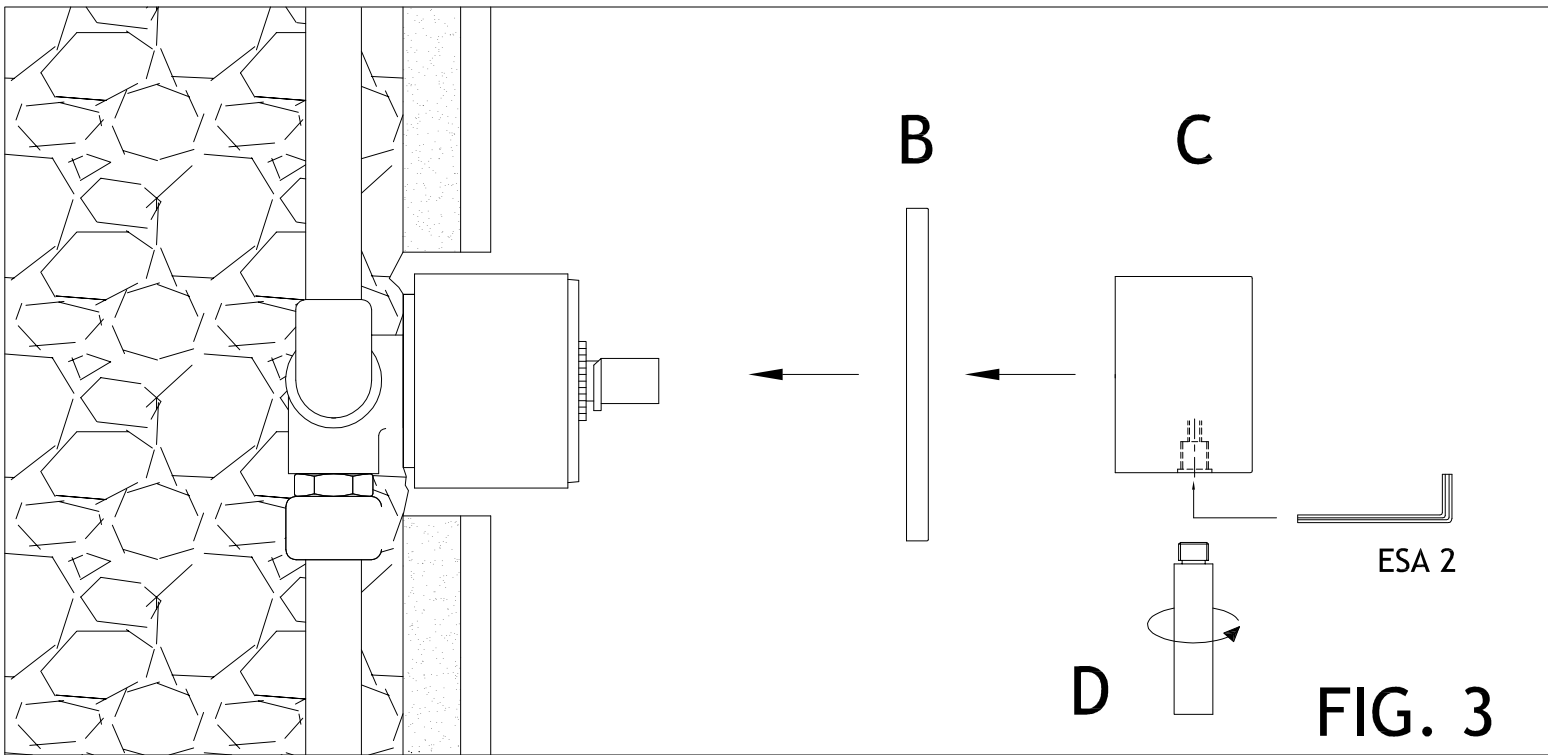
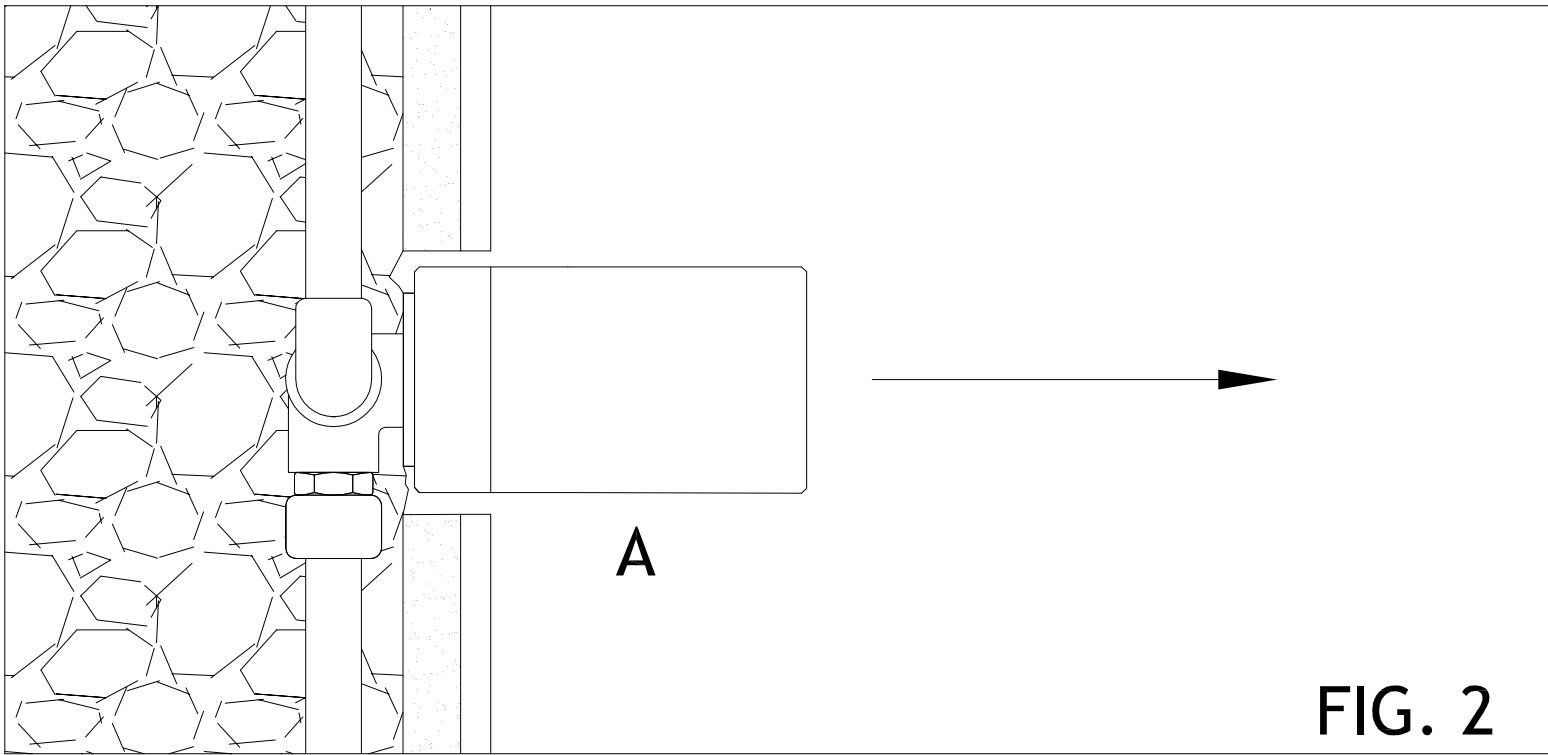


FIG. 1



**ASSEMBLY INSTRUCTIONS TWO WAY DIVERTER**  
**DE700**

**FIRST STEP**

Remove various parts from the carton with extreme care.

Check on the wall that the built-in diverter body is clean and that installation has been made correctly according to our separate pre-assembly instructions. In particular, check that the line indicated on the protection cover is positioned +/-10 mm with respect to the wall level (FIG 1) and that trim ring (diameter 70mm – 2 ¾”) covers wall cutting area.

**ASSEMBLY OF AESTHETIC HANDLE SECTION**

(FIG 2)

Remove protection cover (A)

(FIG 3)

- Push trim ring (B) into position against the wall.
- Fully push handle (C) onto diverter's shaft and tighten grub screw (ESA2) inside the handle.
- Screw lever (D) onto handle (C).